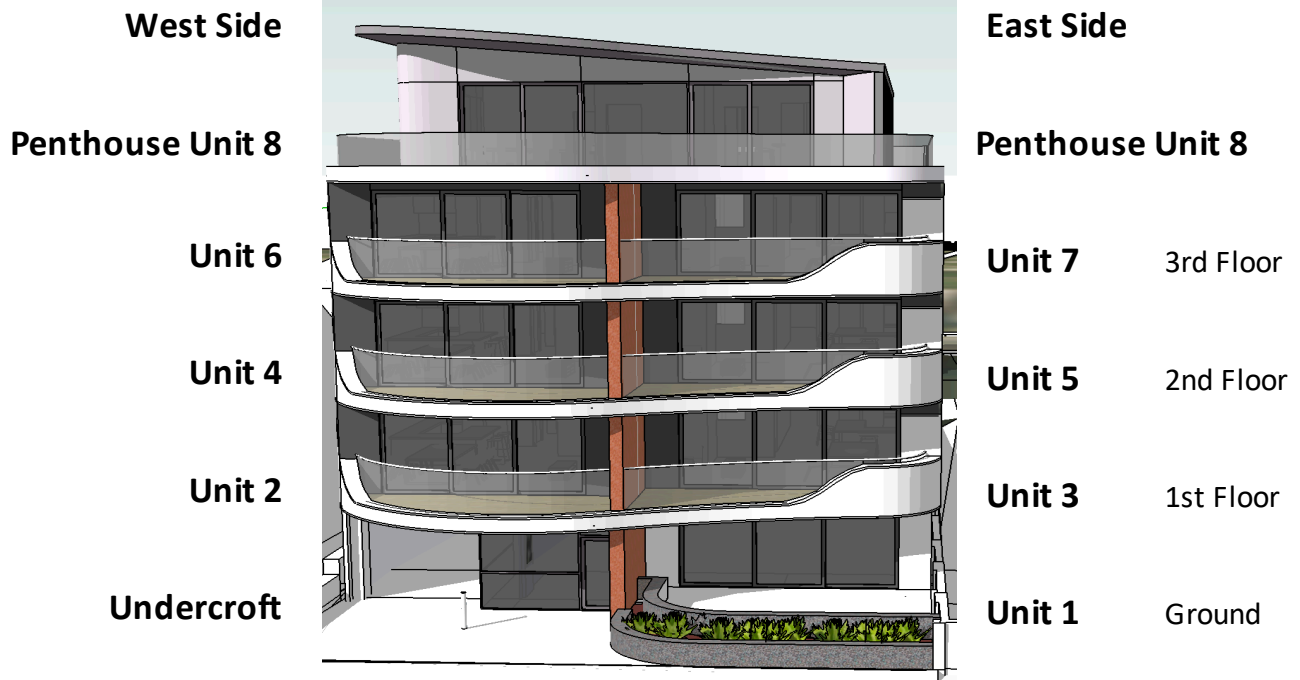


Seaton Beach Developments Ltd

Seaton Beach Apartment numbers looking at the South Elevation from the Beach



Penthouse Unit 8, 3 bedrooms, 3 bathrooms on top floor exclusively
138m² (1,485 ft sq). 360 degree balcony 79m² (846 ft sq)

Unit 6, 3rd floor 2 bedrooms, 2 bathrooms
102m² (1,095 ft sq) balcony 13m² (143 ft sq)

Unit 7, 2 bedrooms, 2 bathrooms 3rd floor
106m² (1,141 ft sq) balcony 12m² (133 ft sq)

Unit 4, 2nd floor 2 bedrooms, 2 bathrooms
102m² (1,095 ft sq) balcony 13m² (143 ft sq)

Unit 5, 2 bedrooms, 2 bathrooms 2nd floor
106m² (1,141 ft sq) balcony 12m² (133 ft sq)

Unit 2, 1st floor 2 bedrooms, 2 bathrooms
102m² (1,095 ft sq) balcony 13m² (143 ft sq)

Unit 3, 2 bedrooms, 2 bathrooms 1st floor
106m² (1,141 ft sq) balcony 12m² (133 ft sq)

Drive through Undercroft to rear parking bays allowing unloading from vehicles under cover

Unit 1, 2 bedrooms, 2 bathrooms, raised G/floor
101m² (1,083 ft sq) patio 33m² (355 ft sq)

All Apartments have south facing balconies, unobstructed sea views and privacy from neighbours

Rear parking area has 8 pre-allocated spaces & 2 for visitors. 5 spaces are covered by a Pergola

Parking bays have power outlets to provide charging for electric cars

Lockable storage bays have electric sockets for charging electric bikes, mobility scooters etc.

Communal external ground floor shower and toilet facility

The rear parking area will have planting designed by a Landscape Architect

All drives & parking areas are brick paviour or tarmac surfaced

There will be a single garage available for sale once the project is complete

Please note all areas are approximate as calculated by Autocad

Website: <http://www.seatonbeach.co.uk> email: info@seatonbeach.co.uk

Please contact us by email or call 07968 170896 for more information