

**architects • engineers**  
 integrated sustainable design  
 mechanical engineering  
 renewable engineering  
 energy modelling  
 healthy building design  
 permaculture design  
 research & development

**Notes**

The Contractor must work to figured dimensions only and check all dimensions on site before proceeding, give notice to the Architect of any inaccuracies and seek instructions.  
 Before carrying out any work shown on this document the Contractor is to read it in conjunction with all other drawings, details, schedules or the like and shall give notice to the Architect of any discrepancies, inconsistencies, divergences or ambiguities and the Architects shall not be responsible for any resulting damage, loss and/or expense.

Where this document has been prepared for the use of the Client as defined in Gale & Snowden Architects Limited (the Architects) terms of engagement and the Architects are not engaged to inspect work in progress on site, the Client does not rely on the Architects to deal with any discrepancies, inconsistencies, divergences or ambiguities and the Architects shall not be responsible for any resulting damage, loss and/or expense.  
 Copyright in all the material on this sheet vests in the Architects who assert their right to be identified as the author of this material in accordance with the Copyright, Designs and Patents Act 1988. The material may not be copied under any circumstances for any purpose whatsoever except with the express written permission of the Architects.

**About this drawing**

This drawing has been prepared at 'Construction' stage (RIBA Stage 5).

**This drawing was drawn at A4 scale**

**CONSTRUCTION ISSUE**

**RIBA Stage 5**

**GALE & SNOWDEN**  
 ARCHITECTS & MECHANICAL ENGINEERS

Seaton Beach

4th Floor Plan  
 General Arrangement

Drawn by:	<b>TG</b>	Scale:	<b>1:100 @ A4</b>
Checked by:	<b>LM</b>	Date:	<b>July 2017</b>
Project No:	<b>E1708</b>	Drawing No:	<b>AL(0)116</b>
		Revision:	<b>T8</b>

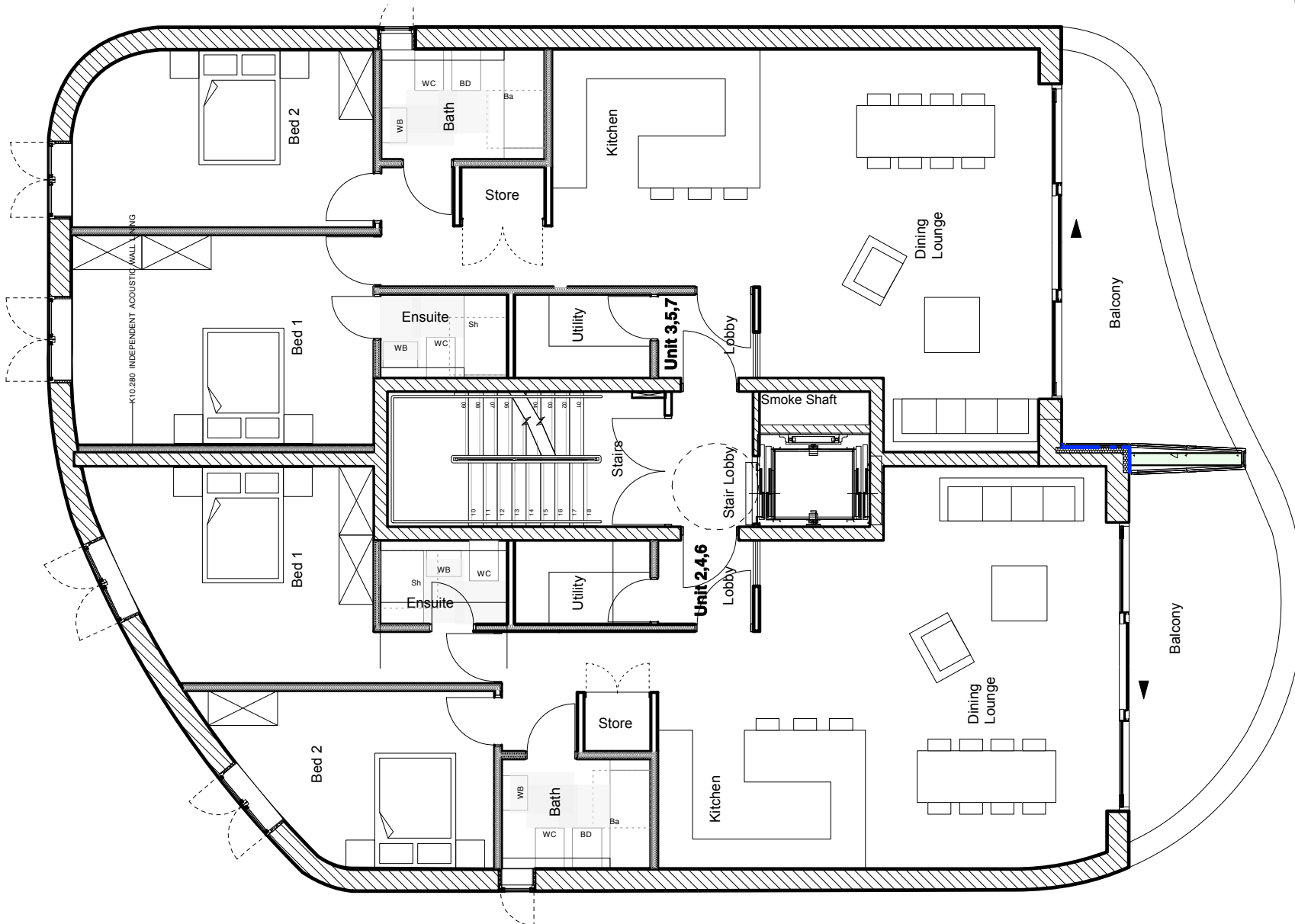
<b>Bideford Office</b> 18 Market Place Bideford Devon EX39 2DR Tel. 01237 474952 Fax. 01237 425669	<b>Exeter Office</b> Exeter Bank Chambers 67 High Street Exeter Devon EX4 3DT Tel. 01392 279220 Fax. 01392 279036
--	--

www.ecodesign.co.uk info@ecodesign.co.uk

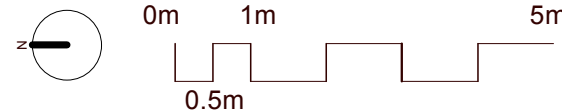
RIBA  
 Chartered  
 Practice



Directors: D Gale L Millyard I Snowden



1st - 3rd FLOOR  
 UNIT -



Seaton Beach